

MUSEUM OF
THE HOME



VENUE HIRE

The Museum of the Home is a place to discover and celebrate, reveal and rethink home together. Set in 300-year-old Grade I listed almshouses and surrounded by verdant gardens and London Plane trees, the Museum is a hidden oasis within the City.

With a central London location and excellent transport links, the Museum is a unique and atmospheric mix of heritage and contemporary spaces – an ideal place to host corporate meeting, team away days, private dinners, supper clubs, receptions, workshops and children's parties, to name but a few.

Following a multi-million pound redevelopment project in 2021, the Museum has two studios, two outdoor gardens, three unique heritage spaces and a large entrance hall available for hire.

The Museum is a registered charity, and all profits from venue hire go towards supporting the Museum and keeping it free and accessible for all.

Please get in touch with our team to start bringing your event to life at

hires@museumofthehome.org.uk

Photo Credits: Hufton + Crow



Garden Atrium

The Garden Atrium, used as the Museum Reception during the day, is a contemporary and characterful space with an airy glass and red-brick design. With panoramic views of the Gardens Through Time, the Atrium is bright and open, making it well suited to dinners and larger gatherings up to 150 standing guests.

Events in the Garden Atrium can include exclusive private access to the galleries, or gardens, with a dedicated tour guide for your guests.

The Garden Atrium is available for hire on Mondays 9am – 11pm and 6pm -11pm Tuesday – Sunday.

Capacity

Standing	150
Dinner	100



Photo Credits: Top - Hufton + Crow; Bottom L - Museum of the Home; Bottom R - James Wicks

Studio

The Studio is a modern, purpose-built space with wooden parquet floor, and an abundance of natural light. Designed with flexible use in mind, the Studio has in-built audiovisual facilities and concertina doors to partition the room. This warm and light space provides a natural home for seminars, workshops, screenings, networking events, parties and receptions.

The Studio has private access and opens out on its own terraced area into the Museum's much-loved Gardens Through Time – ideal for making the most of summer months.

The Studio is available to hire 7 days a week, 9am – 11pm.

Capacity

Auditorium	80
Standing	110
Dinner	60

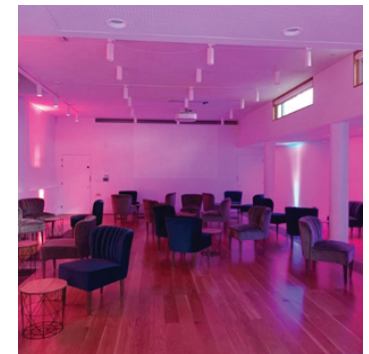
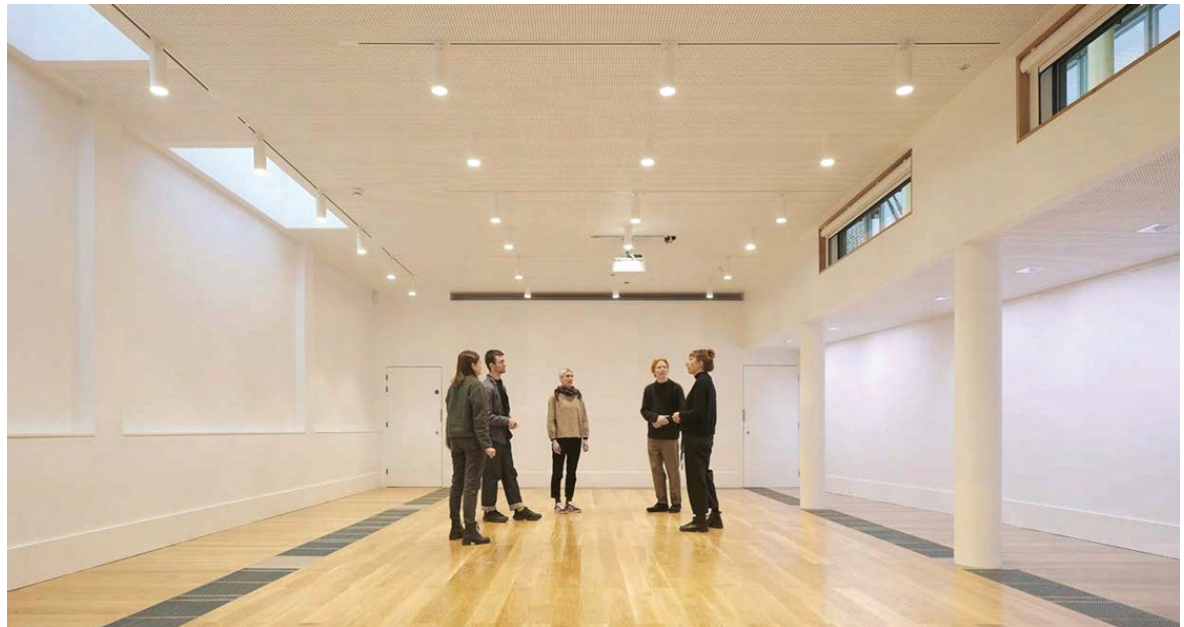


Photo Credits: Top & Bottom L - Hufton + Crow; Bottom Middle & R - Museum of the Home

Georgian Suite

The Georgian Suite comprises an elegant panelled room decorated in early Georgian style, and a connecting kitchen, newly refitted by luxury designers Plain English. Both rooms have doors that open directly onto the Museum's expansive lawns, which can be used as a private entrance.

The pairing of spaces provides an ideal break-out space for business meetings and workshops, and a separate area for refreshments and lunch to be enjoyed. It is possible to hire the Plain English kitchen separately from the Georgian Room. This is a perfect space for an intimate private dinner or workshop.

The Georgian Suite is available to hire 7 days a week, 9am – 11pm

Capacity

Auditorium	40
Standing	60
Dinner	40



Photo Credits: Top L + R; Inigo + Plain English event; Bottom L: Libby Christensen for Wedding; Bottom R: Museum of the Home

Pavilion

The Pavilion is a light and flexible modern space, with access from both the Museum and the gardens.

The natural light and built-in facilities make this room perfect for practical workshops, while the projector and black-out screens can convert it into a space for screenings and presentations.

The Pavilion has a secret door that opens onto the walled Herb Garden, which can be hired additionally for private events.

The Pavilion is available to hire 7 days a week, 9am – 11pm

Capacity

Auditorium	60
Standing	80
Dinner	50



Photo Credits: Top L & R and Bottom R - MoH Event Coordinator; Bottom L: Libby Christenen for Wedding

Chapel

At the heart of the Museum, you will find the original almshouse chapel, a beautiful, high-ceiling space complete with wooden pews and pulpit.

Almshouse residents were obliged to attend services here each week.

The Reading Lounge off the Chapel provides additional space for receptions or private dining. Access to parts of the Rooms Through Time is included in the hire of these spaces.

This 300-year-old space can be hired on Mondays 9am – 11pm and after 6pm Tuesday – Sunday.

Capacity

Auditorium	40
Standing	40
Dinner	20



Undercroft

The Undercroft, part of the historical almshouses, has been modernised to create a beautiful, intimate space for small groups. The gothic vaulted ceilings and soft lighting give the room a warm, yet dramatic character – ideal for a special dinner event or standing reception.

The Undercroft has its own door onto the Gardens Through Time, perfect for a drinks reception that spills out into the evening air.

The Undercroft is available for hire on Mondays 9am – 11pm and after 6pm Tuesday – Sunday.

Capacity

Standing	40
Dinner	20

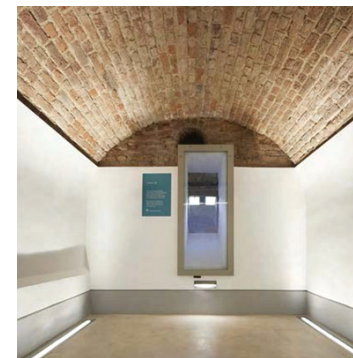


Photo Credits: Top & Bottom R - Hufton + Crow; Bottom L - Em Fitzgerald

Kingsland Lawns

At 4000m², the Museum's sweeping front lawns offer huge possibilities. Make the most of the long summer days with private drinks parties, barbecues, receptions and outdoor team-building activities.

The lawns are ideally located for experiential or brand-building public events such as markets and product launches; on the edge of Zone 1, with excellent transport links and a bustling local community of professionals and residents within walking distance.

Kingsland Lawns are available to hire on Mondays 9am – 5pm and Thursday – Saturday 5pm – 9pm.

Capacity

Auditorium	800
Standing	300 (per lawn)



Gardens Through Time

Our Gardens Through Time show how city gardens have developed over the centuries. From a Tudor knot garden to a modern green roof, they echo changes in society and the wider world, and show the fashions and innovations of the time.

The gardens offer a delightfully refreshing green space amid the industry and bustle of the Hoxton surroundings. They are an ideal spot for an outdoor drinks reception, or summer networking event.

Gardens Through Time are available to hire privately on Mondays 9am – 5pm and 5 – 9.30pm Thursday – Saturday.

Capacity

Standing 300



Prices 2023 (applicable to bookings made after 1st January 2023)

	Standing capacity	Day 9 – 5pm	Half day (4 hours)	Evening 6 – 11pm *Gardens Evening 5pm-9pm
Garden Atrium	150	£2000 + VAT	£1000 + VAT	£2000 + VAT
Studio	110	£1300 + VAT	£650 + VAT	£975 + VAT
Georgian Suite	60	£1000 + VAT	£500 + VAT	£750 + VAT
Pavilion	80	£1100 + VAT	£550 + VAT	£825 + VAT
Chapel	40	£1800 + VAT	£900 + VAT	£1350 + VAT
Undercroft	40	£1000 + VAT	£500 + VAT	£750 + VAT
Kingsland Lawns	800	£6500 + VAT	£3250 + VAT	£3250 + VAT*
Gardens Through Time	300	£1800 + VAT	£900 + VAT	£900 + VAT*

All rates include:

- A dedicated event coordinator during your planning and on the day
- Tables and chairs set up
- AV equipment (projector, screen, speakers and microphones) where possible
- Use of plates, cutlery, glassware (up to 20 guests) available

Optional extras:

- Basic tea and coffee refreshment morning and afternoon @ £2.00 pp + VAT / £1.50pp + VAT for charity and NHS

Prices 2024

	Standing capacity	Day 9 – 5pm	Half day (4 hours)	Evening 6 – 11pm *Gardens Evening 5pm-9pm
Garden Atrium	150	£2200 + VAT	£1100 + VAT	£2200 + VAT
Studio	110	£1400 + VAT	£700 + VAT	£1050 + VAT
Georgian Suite	60	£1100 + VAT	£550 + VAT	£825 + VAT
Pavilion	80	£1200 + VAT	£600 + VAT	£900 + VAT
Chapel	40	£1900 + VAT	£950 + VAT	£1425 + VAT
Undercroft	40	£1100 + VAT	£550 + VAT	£825 + VAT
Kingsland Lawns	800	£7500 + VAT	£3750 + VAT	£3750 + VAT*
Gardens Through Time	300	£1900 + VAT	£950 + VAT	£950 + VAT*

All rates include:

- A dedicated event coordinator during your planning and on the day
- Tables and chairs set up
- AV equipment (projector, screen, speakers and microphones) where possible
- Use of plates, cutlery, glassware (up to 20 guests) available

Optional extras:

- Basic tea and coffee refreshment morning and afternoon @ £2.50 pp + VAT / £2.00pp + VAT for charity and NHS

