

MUSEUM OF
THE HOME



WEDDING VENUE HIRE

The Museum of the Home is a perfect venue for couples looking for a characterful city wedding or civil partnership.

All of the spaces described are licensed for civil ceremonies, as well as receptions. With a charming mix of gardens, heritage and contemporary spaces, use multiple areas for your wedding and celebrations within one venue and make the most of the space throughout the day; raise a toast in the Herb Garden, take group photos on the Lawns or dance the night away in the Garden Atrium.

Situated in zone 1, our 300-year-old Georgian almshouses are surrounded by vibrant East London in the heart of Hackney.

The Museum faces Hoxton station, is well served by buses on Kingsland Road and is only a ten-minute walk from Old Street tube.

Museum of the Home is a registered charity and all profits from venue hire go directly to supporting the Museum's cultural, learning and outreach programmes. Get in touch with our team at hires@museumofthehome.org.uk



Garden Atrium

The Garden Atrium is a newly redeveloped space since 2021 within the airy glass and red-brick 1990s wing of the Museum. With panoramic views over the Gardens Through Time, the Atrium is bright and open, with a distinctive glass ceiling and red-brick walls. Our largest indoor space, it is well suited to dinners and large receptions.

Events in the Garden Atrium can include exclusive private access to the Museum galleries.

The Garden Atrium is available for hire on Mondays 9am – 11pm and after 6pm Tuesday – Sunday.

Capacity

Standing	150
Seated ceremony	100
Dinner	100



Photo Credits: Top - FourGables, James Wicks Photo; Bottom L - Adelle & Harry wedding, Nicola Hippisley Photography; Bottom R - Museum of the Home.

Studio

With a main space and a lobby area, the Studio is flexible for your day; offering space for registrar meetings pre-ceremony, up to 80 seated for a ceremony, followed by post-ceremony drinks spilling out onto the terrace. Great for a casual dinner, and dancing into the evening, this space is a blank canvas for you to personalise.

Situated at the south end of the Gardens Through Time, the Studio's private terrace opens into the gardens; ideal for drinks and canapés on a fine day.

The Studio is available to hire 7 days a week, 9am – 11pm.

Capacity

Seated ceremony	80
Standing	110
Dinner	60



Photo Credits: Top -Museum of the Home; Bottom L - Erika & Matt Wedding, family photographer; Bottom R - Adelle & Harry Wedding, Nicola Hippisley Photography.

Georgian Suite

The Georgian Suite comprises an elegant panelled room decorated in early Georgian style, and a connecting kitchen, newly refitted by luxury designers Plain English.

This intimate suite of rooms is well suited to a small-scale wedding ceremony or celebration, with your nearest and dearest. Both rooms have doors that open directly onto the Museum's expansive lawns, which can be also used as a private entrance.

The Georgian Suite is available to hire 7 days a week, 9am – 11pm

Capacity

Seated ceremony	40
Standing	60
Dinner	40

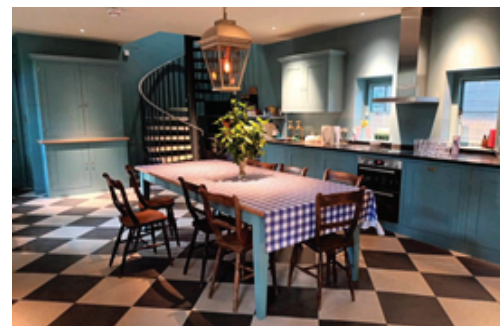


Photo Credits: Top & Bottom L - Rebecca & George Wedding, Libby Christensen Photography; Bottom R - Museum of the Home.

Pavilion

The Pavilion is a light, flexible and modern space fully accessible from the Museum or the Gardens Through Time.

The Pavilion boasts access to gorgeous outdoor spaces for post ceremony drinks, such as the large terrace facing the Knot Garden, or the private, walled Herb Garden. The room includes built in AV such as speakers and portable microphones, to ensure everyone hears the best man's speech!

The Pavilion is available to hire 7 days a week. The Herb Garden is accessible up to 5.30pm Sunday – Wednesday, and 9.30pm Thursday – Saturday

Capacity

Seated ceremony	60
Standing	80
Dinner	50



Photo credits:

Top L - Camillo & Laura Wedding, Mark Chivers Photography;
Top R - Adelle & Harry Wedding, Nicola Hippiisley Photography;
Bottom L - Rebecca & George Wedding, Libby Christenson Photography;
Bottom R - Natasha & Giuseppe Wedding, Emilie Gillet Photographer.

Chapel

At the heart of the Museum, you will find the original almshouse chapel, a beautiful, high-ceiling space complete with wooden pews and pulpit. Almshouse residents were obliged to attend services here each week.

The Reading Lounge, next to the Chapel, provides additional space for receptions with a stunning wooden staircase and warm, lounge-like atmosphere. Private access for your guests to the Museum's galleries is included in the hire of these spaces.

This 300-year-old space can be hired on for non-secular events and ceremonies on Mondays 9am – 11pm and after 6pm Tuesday – Sunday.

Capacity

Seated ceremony 40
Standing 80



Photo credits:
Top L - Sarah & Dan Wedding,
Kevin Fern Photography
Top R & Bottom L - Museum of the Home.

Prices & Packages 2023

Elopement Wedding

Prefer an intimate ceremony? We can offer micro wedding packages for up to 12 of your nearest and dearest. Based on a 2-hour hire, take your choice of the Pavilion, Georgian Suite or Gardens for a simple ceremony and photo opportunity. *Please get in touch for more details.*

Greenery Wedding £2790 + VAT

Tie the knot in front of 60 friends with a ceremony in the Pavilion, followed by a drinks reception in the Gardens Through Time, before moving into the Garden Atrium for dinner and dancing with up to 150 guests. *Hours are 9am – 11pm.*

Summer Wedding £2160 + VAT

Hold an intimate ceremony for 60 in the Pavilion, then let your guests explore the Gardens Through Time with a glass of bubbly in hand, ending up in the Studio for dinner for 60 and later dancing for up to 110 guests. *Hours are 9am – 11pm.*

Museum Wedding £1710 + VAT

An intimate and unique ceremony in the Chapel for up to 40, followed by a drinks reception in Reading Room or Lawns, with private out-of-hours access to the Museum galleries. Finished off by dinner and dancing in the Georgian Suite. *Hours are 5pm – 11pm.*

	Ceremony	Reception	Both [^]	Capacity	Availability
Studio	£650 + vat	£975 + vat	£1462.50 + vat	60 seated for ceremony or dinner, 110 standing	7 days, 9am – 11pm*
Pavilion	£550 + vat	£825 + vat	£1192.50 + vat	60 seated for ceremony, 50 seated for dinner, 80 standing	7 days, 9am – 11pm*
Garden Atrium	£1000 + vat	£2000 + vat	£2700 + vat	100 seated for ceremony, 100 seated for dinner, 150 standing	Mondays 9am – 11pm, Tues-Sun from 5pm
Georgian Suite	£500 + vat	£750 + vat	£1125 + vat	40 seated for ceremony or dinner, 60 standing	7 days, 9am – 11pm*
Chapel	£900 + vat	£1350 + vat	£2025 + vat	20 seated for ceremony or dinner, 40 standing	Mondays 9am – 11pm, Tues – Sun from 5pm

Ceremony hire is 3 hours. Reception hire is 5 hours.
Set up access 2 hours pre and 1 hour post hire times.

[^] If you hire a space for both ceremony and reception, you will receive a 10% discount.

* All outdoor areas are closed from 5.30pm Sun – Weds, 9.30pm Thurs – Sat, as a specific clause in the Museum's premises licence. This includes Kingsland Lawns, Gardens Through Time and the Walled Herb Garden.

Prices & Packages 2024

Elopement Wedding

Prefer an intimate ceremony? We can offer micro wedding packages for up to 12 of your nearest and dearest. Based on a 2-hour hire, take your choice of the Pavilion, Georgian Suite or Gardens for a simple ceremony and photo opportunity. *Please get in touch for more details.*

Greenery Wedding £3105 + VAT

Tie the knot in front of 60 friends with a ceremony in the Pavilion, followed by a drinks reception in the Gardens Through Time, before moving into the Garden Atrium for dinner and dancing with up to 150 guests. *Hours are 9am – 11pm.*

Summer Wedding £2340 + VAT

Hold an intimate ceremony for 60 in the Pavilion, then let your guests explore the Gardens Through Time with a glass of bubbly in hand, ending up in the Studio for dinner for 60 and later dancing for up to 110 guests. *Hours are 9am – 11pm.*

Museum Wedding £1845 + VAT

An intimate and unique ceremony in the Chapel for up to 40, followed by a drinks reception in Reading Room or Lawns, with private out-of-hours access to the Museum galleries. Finished off by dinner and dancing in the Georgian Suite. *Hours are 5pm – 11pm.*

	Ceremony	Reception	Both^	Capacity	Availability
Studio	£700+ vat	£1050 + vat	£1575 + vat	60 seated for ceremony or dinner, 110 standing	7 days, 9am – 11pm*
Pavilion	£600 + vat	£900 + vat	£1350 + vat	60 seated for ceremony, 50 seated for dinner, 80 standing	7 days, 9am – 11pm*
Garden Atrium	£1100 + vat	£2250 + vat	£3015 + vat	100 seated for ceremony, 100 seated for dinner, 150 standing	Mondays 9am – 11pm, Tues-Sun from 5pm
Georgian Suite	£550+ vat	£825 + vat	£1237.50 + vat	40 seated for ceremony or dinner, 60 standing	7 days, 9am – 11pm*
Chapel	£950 + vat	£1425 + vat	£2137.50 + vat	20 seated for ceremony or dinner, 40 standing	Mondays 9am – 11pm, Tues – Sun from 5pm

Ceremony hire is 3 hours. Reception hire is 5 hours.
Set up access 2 hours pre and 1 hour post hire times.

^ If you hire a space for both ceremony and reception, you will receive a 10% discount.

* All outdoor areas are closed from 5.30pm Sun – Weds, 9.30pm Thurs – Sat, as a specific clause in the Museum's premises licence. This includes Kingsland Lawns, Gardens Through Time and the Walled Herb Garden.

Photo Credits: Hufton + Crow



Museum of the Home
136 Kingsland Road
London E2 8EA
museumofthehome.org.uk

[hires@museumofthehome.org.uk](mailto: hires@museumofthehome.org.uk)

MUSEUM OF
THE HOME